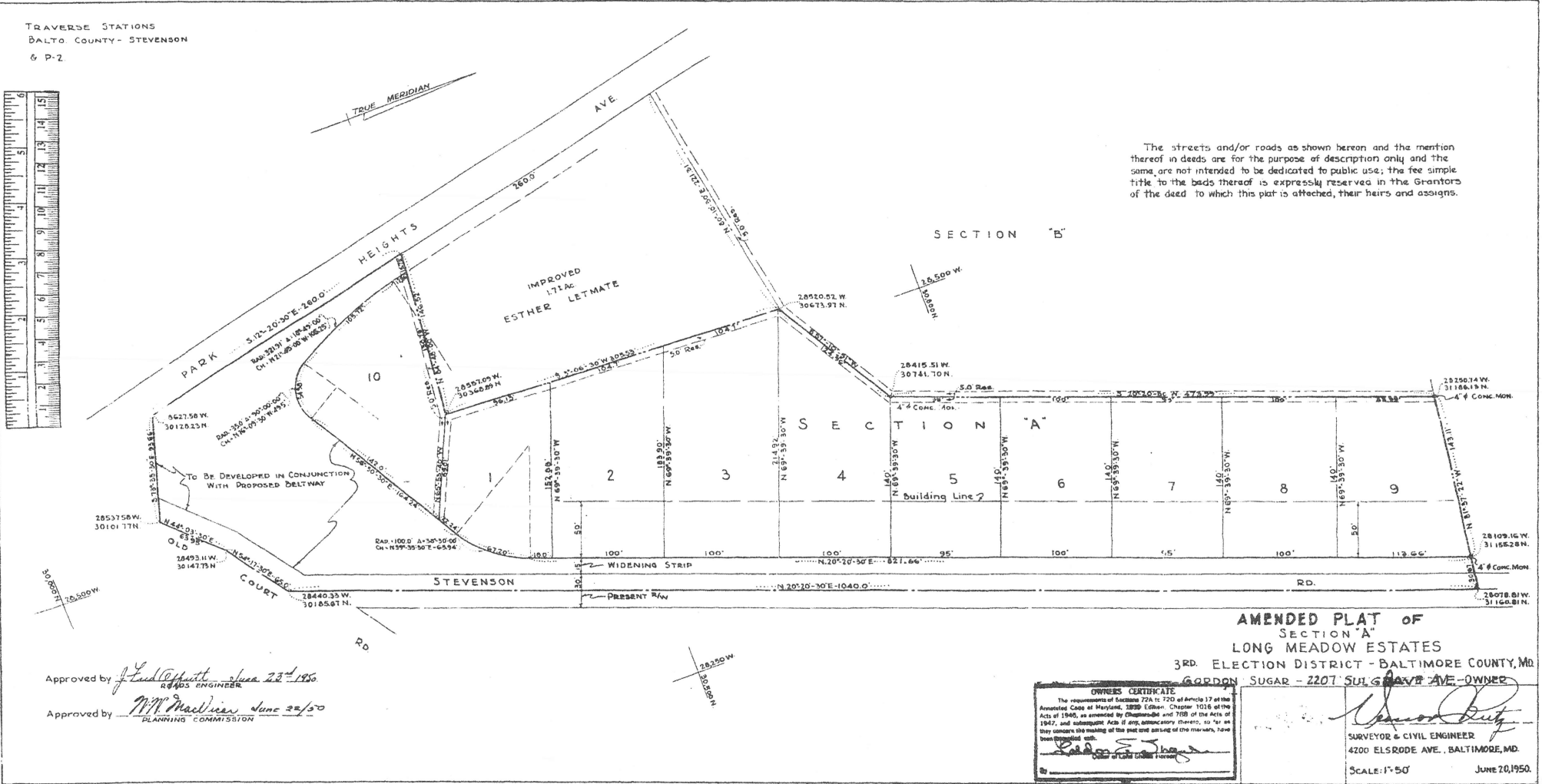


TRAVERSE STATIONS  
BALTO COUNTY - STEVENSON  
6 P-2



The streets and/or roads as shown hereon and the mention thereof in deeds are for the purpose of description only and the same are not intended to be dedicated to public use; the fee simple title to the lands thereof is expressly reserved in the Grantors of the deed to which this plat is attached, their heirs and assigns.



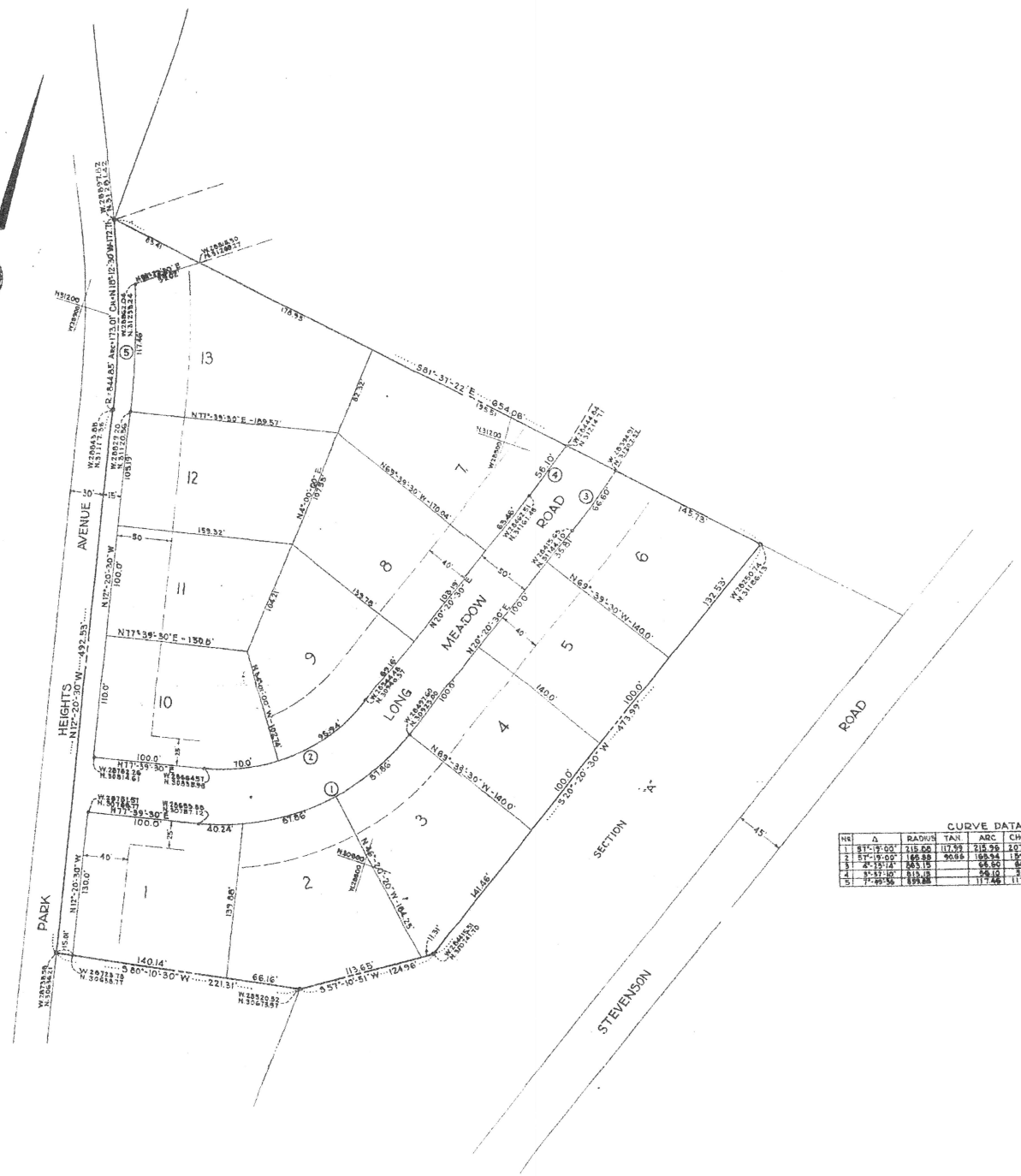
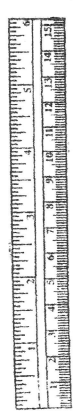
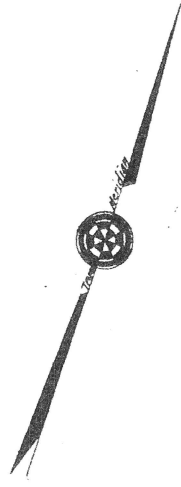
Approved by *J. Fred Offutt* June 23, 1950  
ROADS ENGINEER  
Approved by *M. W. MacLennan* June 22, 1950  
PLANNING COMMISSION

**AMENDED PLAT OF SECTION "A" LONG MEADOW ESTATES**  
3RD. ELECTION DISTRICT - BALTIMORE COUNTY, MD.  
GORDON SUGAR - 2207 SULGRAVE AVE - OWNER

**OWNERS CERTIFICATE**  
The requirements of Sections 72A to 72D of Article 17 of the Annotated Code of Maryland, 1959 Edition, Chapter 101B of the Acts of 1940, as amended by Chapters 86 and 788 of the Acts of 1947, and subsequent Acts if any, promulgatory therein, so far as they concern the making of the plat and any of the matters hereon mentioned, have been complied with.

*Edward R. Burt*  
SURVEYOR & CIVIL ENGINEER  
4200 ELSRODE AVE., BALTIMORE, MD.  
SCALE: 1"=50' JUNE 20, 1950

16/46



**CURVE DATA**

NO.	Δ	RADIUS	TAN	ARC	CHORD	CH. GRADING
1	81° 19' 00"	215.60	117.53	215.58	201.07	N43° 08' 00" E
2	87° 19' 00"	166.80	90.66	166.54	155.11	N42° 08' 00" E
3	8° 51' 11"	185.15	65.55	64.48	118.07	N18° 01' 33" E
4	8° 57' 10"	113.12	56.10	56.00	108.21	N18° 21' 38" E
5	7° 49' 56"	139.88	117.46	117.57	116° 15' 19" W	

**SECTION 'B'**  
**LONG MEADOW ESTATES**  
 THIRD ELECTION DISTRICT  
 BALTIMORE COUNTY, MD.

The streets and/or roads as shown hereon and the mention thereof hereon are for the purpose of description only and the same are not intended to be dedicated to public use; the fee simple title to the beds thereof is expressly reserved in the Grantors of the deed to which this plat is attached, their heirs and assigns.

BALTIMORE COUNTY PLANNING COMMISSION  
 APPROVED *Melvin R. Rice* DATE *4-15-1966*  
 CITY ENGINEER

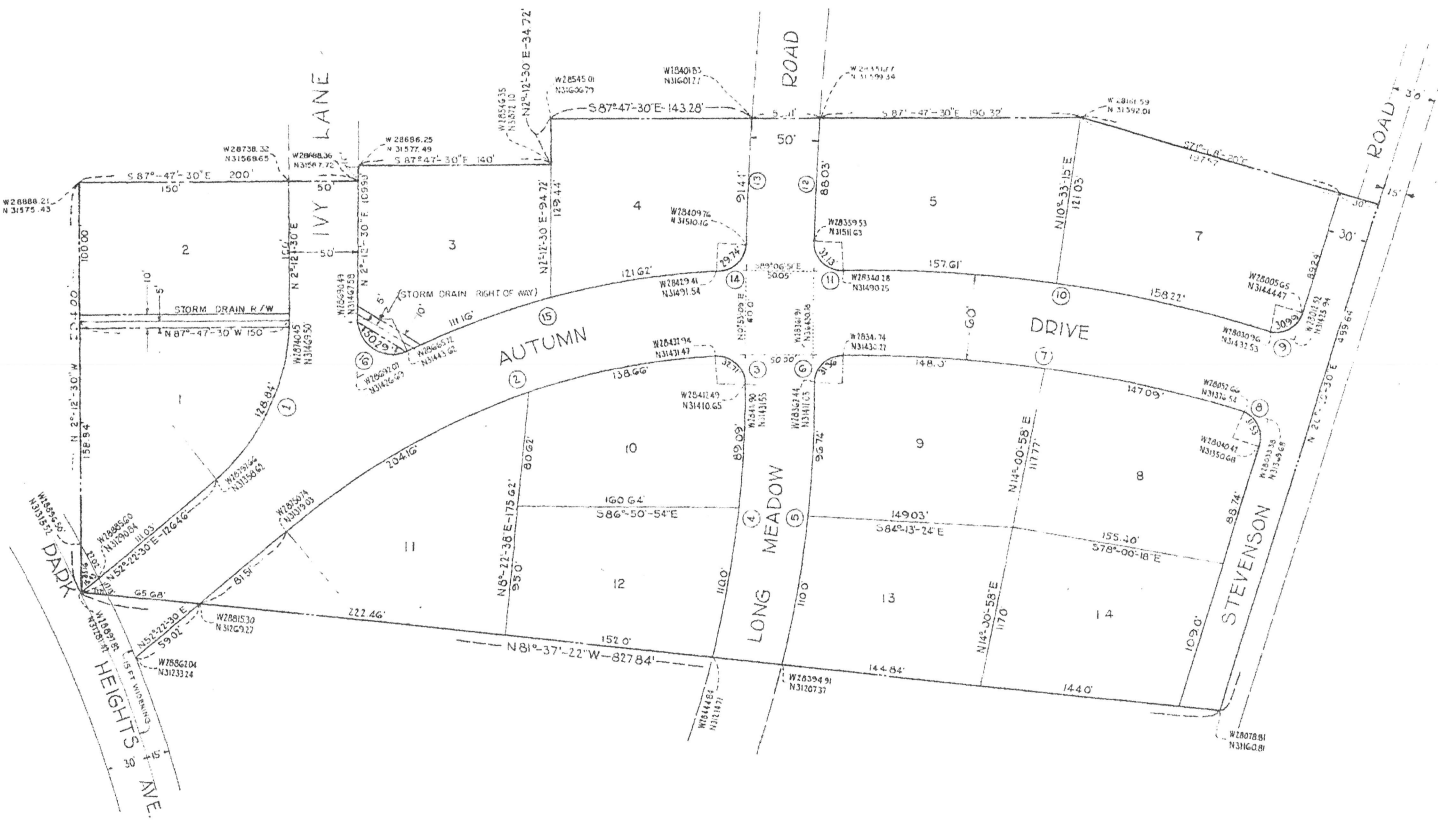
BALTIMORE COUNTY HIGHWAYS DEPARTMENT  
 APPROVED *J. Paul Gifford* DATE *4-15-1966*  
 COUNTY ENGINEER

**GRANTEE CERTIFICATE**  
 I, the undersigned, being duly qualified and sworn, do hereby certify that the foregoing is a true and correct copy of the original as shown to me by the grantor and that the same is in accordance with the original as shown to me by the grantor and that the same is in accordance with the original as shown to me by the grantor and that the same is in accordance with the original as shown to me by the grantor.

*Robert E. Shuler*  
 COUNTY ENGINEER

*Robert E. Shuler*  
 SURVEYOR & CIVIL ENGINEER  
 4200 ELSBROOK AVE  
 BALTIMORE, MD  
 DATE: AUGUST 20, 1950.  
 REVISION: SEP. 11, 1950.

16/66



The streets and/or roads as shown hereon and the mention thereof in deeds are for the purpose of description only and the same are not intended to be dedicated to public use, the fee simple title to the beds thereof is expressly reserved in the Grantors of the deed to which this plat is attached, their heirs and assigns.

**CURVE DATA**

NO.	Δ	RADIUS	TAN	ARC	CHORD	CH BEARING
1	50°-10'-00"	147.15	66.80	128.84	114.76	N35°55'-31" E
2	36°-17'-04"	541.33	342.61	331.11	N10°-31'-01" E	
3	133°-27'-00"	70.00	-32.71	19.18	S44°-19'-26" E	
4	145°-01'-40"	611.15	199.09	190.59	S34°-22'-24" W	
5	15°-43'-14"	663.15	206.14	286.15	S 91°-02'-28" W	
6	169°-58'-58"	73.00	31.36	20.75	N47°-07'-16" E	
7	116°-21'-40"	696.19	794.09	178.02	S77°-10'-21" E	
8	107°-47'-17"	70.00	31.50	70.41	N17°-15'-04" W	
9	137°-10'-56"	20.00	10.99	17.98	N64°-44'-13" E	
10	107°-21'-40"	696.19	315.83	315.66	S78°-55'-24" E	
11	187°-01'-48"	70.00	32.13	18.18	N47°-38'-04" W	
12	249°-01'-03"	150.00	88.03	88.02	N 51°-05'-51" E	
13	71°-15'-14"	1336.00	91.44	92.44	N 74°-08'-12" E	
14	00°-11'-11"	10.00	70.76	71.07	N42°-31'-10" E	
15	115°-15'-31"	609.33	131.78	131.33	N38°-01'-21" E	
16	115°-15'-31"	25.00	60.79	47.23	N52°-15'-15" W	

APPROVED: BALTIMORE CO. PLANNING COMMISSION  
 By: *William E. Rice* DIRECTOR  
 DATE: Oct. 11, 1981

APPROVED: BALTIMORE CO. HIGHWAYS DEPT.  
 By: *William E. Smith* HIGHWAYS ENGINEER  
 DATE: Oct. 11, 1981

SECTION "C"  
**LONG MEADOW ESTATES**  
 DEVELOPMENT OF  
 GORDON E. SUGAR  
 THIRD ELECTION DISTRICT  
 BALTIMORE COUNTY MD.

WALTER E. MEYER  
 SURVEYOR

*William E. Smith*  
 SURVEYOR & CIVIL ENGINEER  
 4700 ELSBROE AVE. #A2144  
 BALTIMORE, MARYLAND  
 SCALE: 1"=50'  
 AUGUST 24, 1981

17/41-42



The streets and/or roads as shown hereon and the mention thereof is made for the purpose of description only and the same are not intended to be dedicated to public use. The fee simple title to the beds thereof is expressly reserved in the Grants of the deed to which this plat is attached, their heirs and assigns.

CURVE DATA						
No.	θ	RADIUS	TAN	ARC	CHORD	BEARING
1	14° 38' 49"	2500.00	-	630.21	237.47	N 13° 23' 54" E
2	14° 43' 33"	2550.00	-	655.39	235.58	N 13° 21' 36" E
3	10° 32' 32"	1022.62	112.30	223.85	223.41	N 6° 28' 46" E
4	12° 32' 32"	1072.62	117.07	234.80	234.33	N 6° 28' 46" E
5	16° 50' 37"	1072.62	-	309.63	299.56	N 6° 19' 44" E
6	16° 28' 38"	1072.62	-	317.57	310.47	N 6° 25' 45" E

# SECTION 'D' LONG MEADOW ESTATES

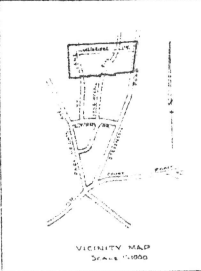
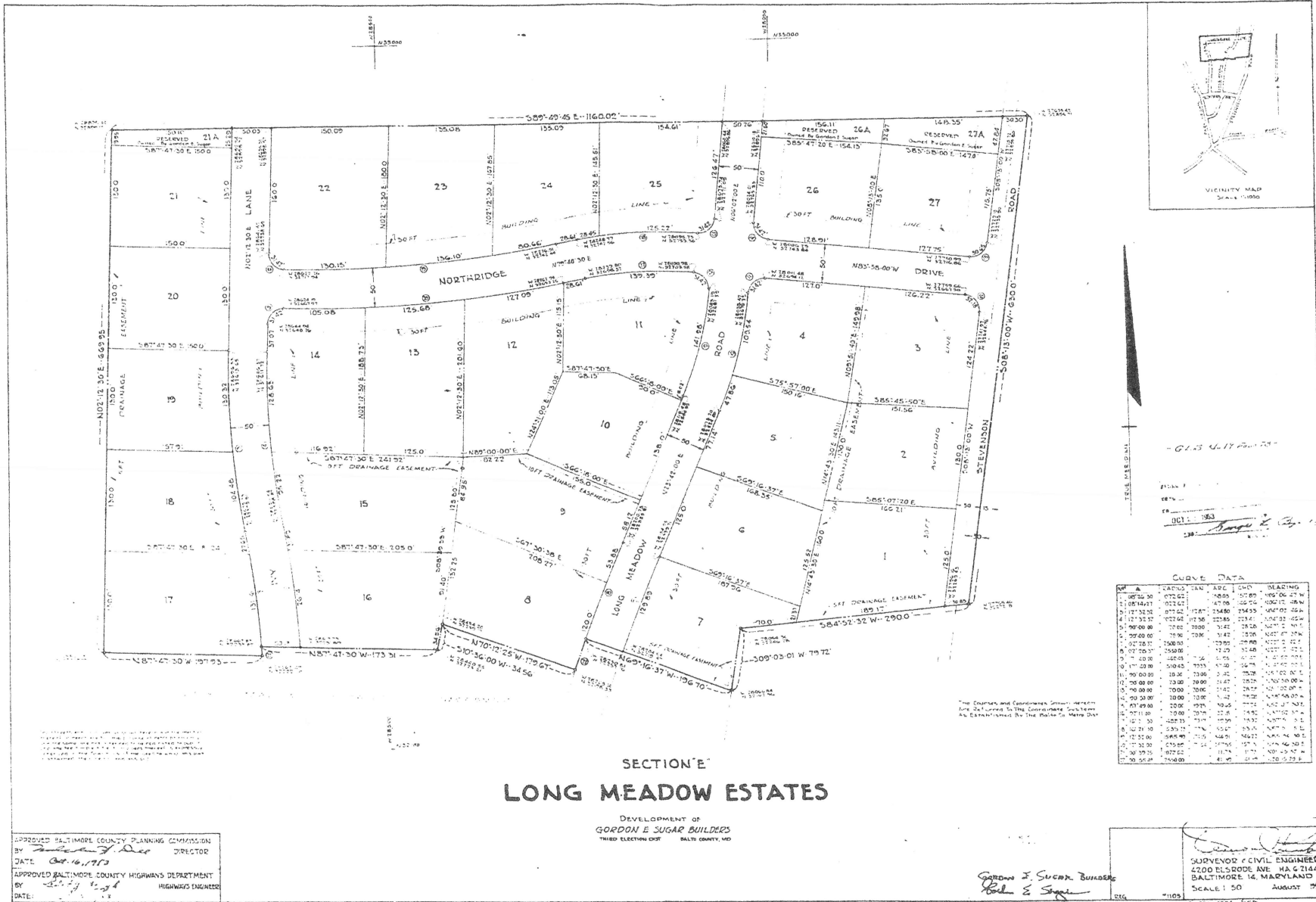
DEVELOPMENT OF  
GORDON E. SUGAR BUILDERS  
THIRD ELECTION DISTRICT  
BALTIMORE COUNTY, MD.

APPROVED: BALTIMORE COUNTY PLANNING COMMISSION  
BY: *Freeman H. Rice* DIRECTOR  
DATE: *Aug 18, 1955*  
APPROVED: BALTIMORE COUNTY HIGHWAYS DEPARTMENT  
BY: *J. Paul Coffey* HIGHWAYS ENGINEER  
DATE: *Aug 18, 1955*

OWNER'S CERTIFICATE  
The recorder of plat Section 17-A is 2200 at Article 17 of the Annotated Code of Maryland, 1959 Edition, Chapter 102 of the Code of 1949, as amended by Chapter 884 and 713 of the Acts of 1947, and subsequent Acts, and amendments thereto, in so far as they apply to the making of all the plat and surveying instruments, have been complied with.

*[Signature]*  
SURVEYOR & CIVIL ENGINEER  
4200 ELKSTONE AVE. HA 2166  
BALTIMORE 14, MD.  
SCALE 1"=50'  
JUNE 22/1952

18/49



VICINITY MAP  
SCALE: 1"=1000'

- 61.5 UNIT PER LOT

NO. 11 1963  
*[Signature]*  
 ENGINEER

**CURVE DATA**

STATION	CHORD	ARC	CHORD BEARING
1+00.00	100.00	100.00	N89°00'00"W
1+17.32	17.32	17.32	N89°00'00"W
1+34.64	34.64	34.64	N89°00'00"W
1+51.96	51.96	51.96	N89°00'00"W
1+69.28	69.28	69.28	N89°00'00"W
1+86.60	86.60	86.60	N89°00'00"W
2+03.92	103.92	103.92	N89°00'00"W
2+21.24	121.24	121.24	N89°00'00"W
2+38.56	138.56	138.56	N89°00'00"W
2+55.88	155.88	155.88	N89°00'00"W
2+73.20	173.20	173.20	N89°00'00"W
2+90.52	190.52	190.52	N89°00'00"W
3+07.84	207.84	207.84	N89°00'00"W
3+25.16	225.16	225.16	N89°00'00"W
3+42.48	242.48	242.48	N89°00'00"W
3+59.80	259.80	259.80	N89°00'00"W
3+77.12	277.12	277.12	N89°00'00"W
3+94.44	294.44	294.44	N89°00'00"W
4+11.76	311.76	311.76	N89°00'00"W
4+29.08	329.08	329.08	N89°00'00"W
4+46.40	346.40	346.40	N89°00'00"W
4+63.72	363.72	363.72	N89°00'00"W
4+81.04	381.04	381.04	N89°00'00"W
4+98.36	398.36	398.36	N89°00'00"W
5+15.68	415.68	415.68	N89°00'00"W
5+33.00	433.00	433.00	N89°00'00"W
5+50.32	450.32	450.32	N89°00'00"W
5+67.64	467.64	467.64	N89°00'00"W
5+84.96	484.96	484.96	N89°00'00"W
6+02.28	502.28	502.28	N89°00'00"W
6+19.60	519.60	519.60	N89°00'00"W
6+36.92	536.92	536.92	N89°00'00"W
6+54.24	554.24	554.24	N89°00'00"W
6+71.56	571.56	571.56	N89°00'00"W
6+88.88	588.88	588.88	N89°00'00"W
7+06.20	606.20	606.20	N89°00'00"W
7+23.52	623.52	623.52	N89°00'00"W
7+40.84	640.84	640.84	N89°00'00"W
7+58.16	658.16	658.16	N89°00'00"W
7+75.48	675.48	675.48	N89°00'00"W
7+92.80	692.80	692.80	N89°00'00"W
8+10.12	710.12	710.12	N89°00'00"W
8+27.44	727.44	727.44	N89°00'00"W
8+44.76	744.76	744.76	N89°00'00"W
8+62.08	762.08	762.08	N89°00'00"W
8+79.40	779.40	779.40	N89°00'00"W
8+96.72	796.72	796.72	N89°00'00"W
9+14.04	814.04	814.04	N89°00'00"W
9+31.36	831.36	831.36	N89°00'00"W
9+48.68	848.68	848.68	N89°00'00"W
9+66.00	866.00	866.00	N89°00'00"W
9+83.32	883.32	883.32	N89°00'00"W
10+00.64	900.64	900.64	N89°00'00"W

SECTION E  
**LONG MEADOW ESTATES**

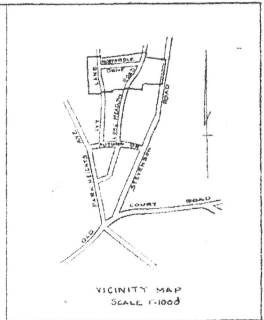
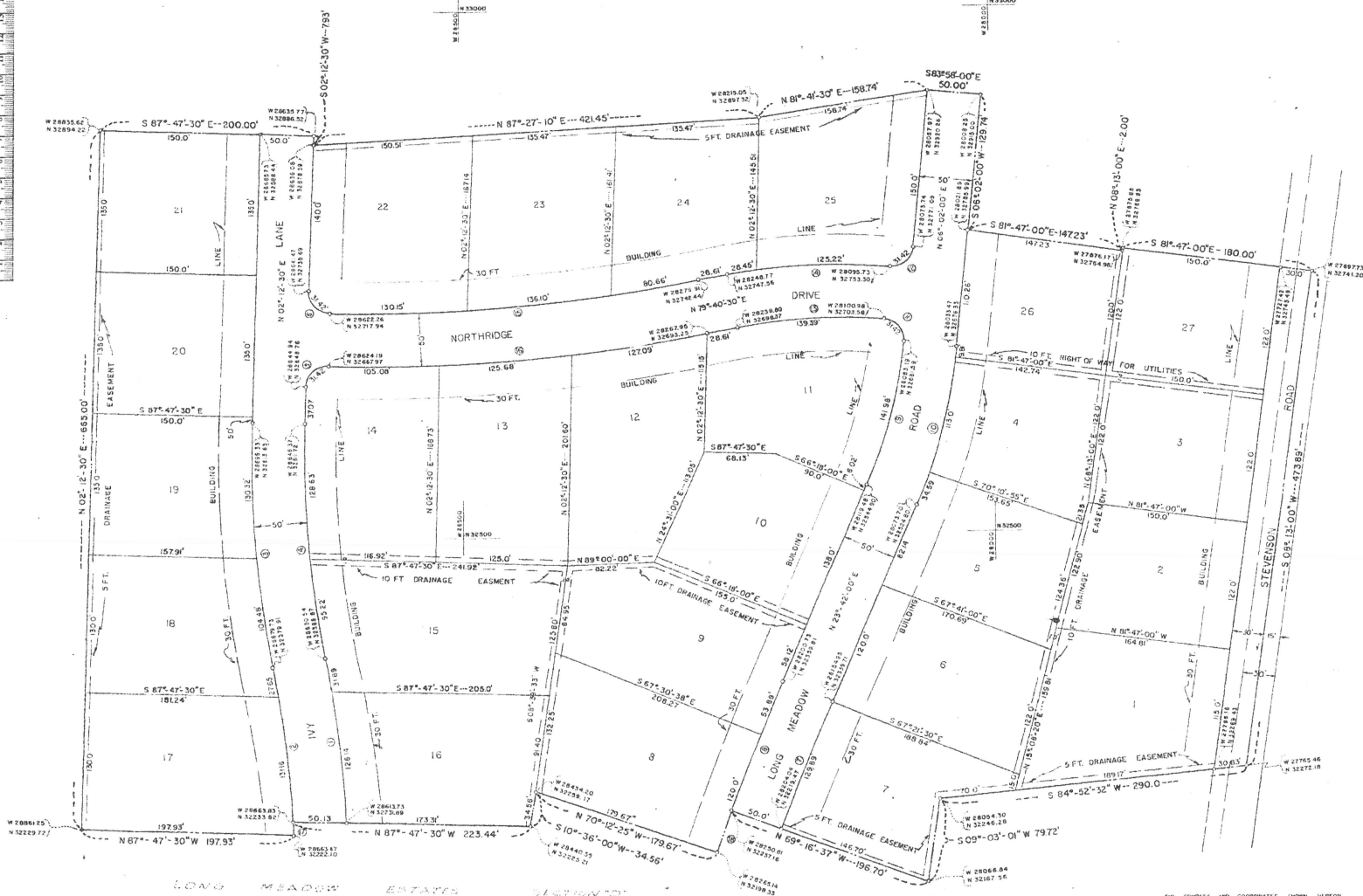
DEVELOPMENT OF  
**GORDON & SUGAR BUILDERS**  
 THIRD ELECTION DIST. BALTIMORE, MD

APPROVED BALTIMORE COUNTY PLANNING COMMISSION  
 BY *[Signature]* DIRECTOR  
 DATE 08-16-78  
 APPROVED BALTIMORE COUNTY HIGHWAYS DEPARTMENT  
 BY *[Signature]* HIGHWAYS ENGINEER  
 DATE: 8-17-78

GORDON & SUGAR BUILDERS  
*[Signature]*

*[Signature]*  
 SUPERVISOR & CIVIL ENGINEER  
 4200 ELSDORP AVE. HA G 2144  
 BALTIMORE 14, MARYLAND  
 SCALE: 1"=50'  
 AUGUST 1978

10/178



No.	A	RADIUS	TAN	ARC	CHD	BEARING
1	08°26'-30"	1072.62	158.03	157.89	158.06	N06°06'-47" W
2	08°14'-27"	1022.62	147.06	146.96	146.96	N06°11'-48" W
3	12°35'-30"	1072.62	177.87	174.80	174.83	N04°03'-46" W
4	12°35'-30"	1022.62	162.36	162.85	162.84	N04°03'-46" W
5	90°00'-00"	2000	2000	31.42	282.8	N47°12'-30" E
6	90°00'-00"	2000	2000	31.42	282.8	N47°12'-30" E
7	05°58'-37"	2500.00	129.89	129.88	129.88	N22°12'-42" E
8	05°58'-37"	2500.00	132.49	132.48	132.48	N22°12'-42" E
9	17°40'-00"	460.48	71.56	141.42	141.42	N47°52'-00" E
10	17°40'-00"	510.48	79.33	157.40	157.78	N47°52'-00" E
11	90°00'-00"	2000	2000	31.42	282.8	N47°12'-30" E
12	05°58'-37"	2000	2000	31.42	282.8	N47°12'-30" E
13	16°21'-30"	488.23	70.17	139.39	138.92	N87°51'-15" E
14	16°21'-30"	538.23	77.36	153.67	153.15	N87°51'-15" E
15	12°35'-00"	1585.89	174.16	174.22	174.22	N85°56'-30" E
16	05°58'-37"	1638.89	179.64	182.05	182.13	N85°56'-30" E
17	05°58'-37"	1022.62	147.3	147.3	147.3	N05°45'-52" W
18	05°58'-37"	1022.62	147.3	147.3	147.3	N05°45'-52" W

THE COURSES AND COORDINATES SHOWN HEREON ARE REFERRED TO THE COORDINATE SYSTEM AS ESTABLISHED BY THE BALTO. CO. METRO DISTRICT.

## REVISED SUBDIVISION OF SECTION 'E' LONG MEADOW ESTATES

DEVELOPMENT OF  
GORDON E. SUGAR BUILDERS  
THIRD ELECTION DIST. BALTO. COUNTY, MD.

APPROVED BALTIMORE COUNTY PLANNING COMMISSION  
BY *James J. Sides* DIRECTOR  
DATE *24.26.1954*  
APPROVED BALTIMORE COUNTY HIGHWAYS DEPARTMENT  
BY *Robert G. Dwyer* HIGHWAYS ENGINEER  
DATE *2.15.1954*

REGISTERED PROFESSIONAL SURVEYOR  
*Charles E. Suggs, Inc.*

REGISTERED PROFESSIONAL SURVEYOR & CIVIL ENGINEER  
*Charles E. Suggs, Inc.*  
4200 ELSRODE AVE. HAVES 2144  
BALTIMORE 14, MARYLAND  
SCALE: 1" = 50'  
FEBRUARY 1954

7926 STEVENSON RD. BARKSTOWN 8, MD. MSA 551133G-919

19/1/50

